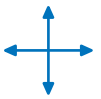




Deliver an outstanding wash quality, maximizing wash volume with workhorse tunnel equipment from the global leader in vehicle cleaning technology.

www.markvii.net

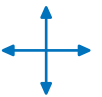
 **Mark VII**
CLEAN CARS®



SoftLine1™

Advantages for you and your customers.

- Stainless steel brush station cut from premium material for stability, durability, and corrosion resistance.
- High-pressure turbo technology eliminates prep labor and boosts cleaning quality.
- Patented SofTecs® foam material gently and quietly cleans, polishes, and protects your customer's vehicle investment.
- Engineered to address every vehicle surface and deliver a great customer experience.
- Robust and reliable electric tunnel system to keep you running, creating happy customers.



**Earn more
profit from
your
carwash
business.**

4DIMENSIONS for a successful car wash.

For over 50 years, Mark VII and its German parent company WashTec have led the industry to develop innovative, highly efficient wash technology, providing comprehensive service and high-quality chemicals you need to maximize your business results.

Leveraging decades of tunnel engineering and market leadership, SoftLine 1 brings a unique combination of wash quality, speed, ease of use, and design — what we call the 4DIMENSIONS of a modern car wash — to the tunnel wash format.

As a result, SoftLine delivers an incredible customer experience combined with the business results you require. No other equipment on the market has the flexibility to configure your tunnel to your exact requirements while providing your customers with best-in-class cleaning quality. With 4DIMENSIONS, discover how SoftLine 1 ensures maximum customer satisfaction and profits for you.

Tunnel Accessories



Premium Brush Controller

- Transparent front on the control system enclosure makes it easy to see the status of each inverter.
- Each brush has an independent VFD and smooth torque control, allowing it to immediately respond to obstructions (e.g., trailer hitch).



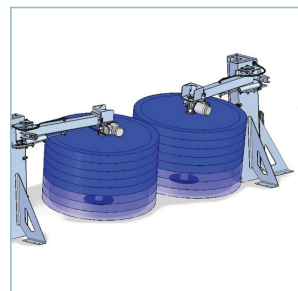
Entrance Gantry

- Illuminated gantry, fully customizable to your brand.
- Includes instructions and package selection information.
- Foam curtain and LED lights can be added to this entrance arch.



Equipment Mounted LED Lights

- Attractive LED lights illuminate the chemicals applied to the vehicle.
- Can also be used on high pressure, rinse, or spot-free applications.
- Designed for the heavy-duty operation of the car wash.



Free Standing Grill Brushes

- Additional brush contact to increase even more wash quality.
- Can be added to the front of the brush station.



Polish or Buff/Shine 3 Brush Station

- Increase your revenue by adding a brushed polish option to your wash package.
- This equipment can also be used following the dryers for an extra buff and dry.

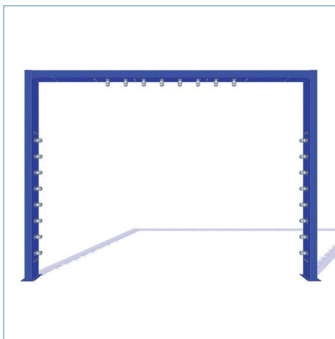
High-pressure turbo technology to optimize cleaning and rinsing.

Thorough cleaning of even the most intricate wheels.



Dynamic, High-Pressure Arch

- Powerful top and side manifolds loaded with 18 zero-degree turbo nozzles.
- Combined with a 45 gpm at 1000 psi pump & 30HP motor.
- Can be utilized as a prewash or a high-pressure rinse for touchless applications to thoroughly clean the vehicle's front.



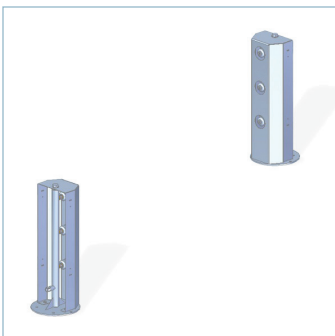
Static High-Pressure Arch

- High-pressure prewash arch using 24 turbo nozzles mounted on a small footprint arch.
- Combined with a 27 gpm at 800 psi pump.



Tall Side Blasters

- Eight static turbo nozzle manifolds on each side of the car.
- Ideal for removing mud, snow, or ice before the brush station.
- Combined with a 18 gpm at 800 psi pump.



Low Rocker Blasters

- Three static turbo nozzles on each side of the car.
- Ideal for wheels and sill.
- Combined with a 18 gpm at 800 psi pump.



Simple Operation

Simple, reliable air cylinders extend the brushes into the wheels of the approaching vehicle.



Built-In Safety

UHMW rollers guide the brushes into position against the wheels. The top-mounted rubber safety wheel ensures there is no contact with painted vehicle surfaces.



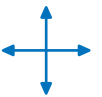
Cleaning Power

Heavy-duty electric motors rotate the 96"/244 cm long brushes against the wheels as they travel along the conveyor, providing full 360° cleaning power.



Brush Lubrication

On-board spray manifolds lubricate the alternating two-step brush design to scrub dirt and road grime from the wheels and sills.



Gentle and effective cleaning using SoftTecs® foam technology.



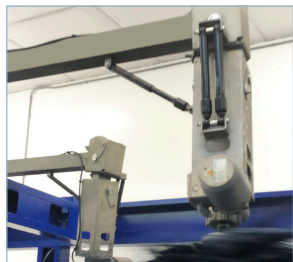
Horizontal Brush

The quiet and gentle wash pressure of the top brush is controlled with a combination of pneumatic cylinders and a counterbalance system, making the brush simple yet effective on all vehicles.



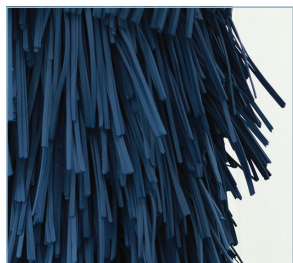
Wrap-Arounds

Wraps pivot overhead to ensure smooth travel around the front, rear, and sides of the vehicle. Brushes, at 57" in diameter, move across the centerline at the front and back of the car to address the most challenging areas to clean.



Easy to Maintain

Dual axle ball bearings and shock absorbers make the wrap-around brushes easy to maintain while keeping performance and functionality in mind.



Safe for All Vehicle Finishes

Our patented SoftTecs® closed-cell foam material is specially formulated to shed water and dirt while removing the toughest road grime. As a result, customers prefer the quiet SoftTecs experience to other brush materials' loud, aggressive sound.



Added Cleaning Power

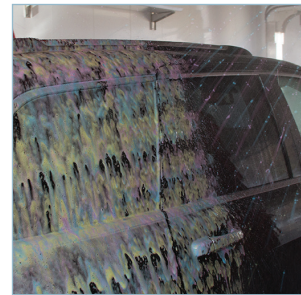
Tall vertical brushes and short grill brushes can easily be added to provide extra attention to hard-to-clean vehicle surfaces.

Low pressure applications ensure chemicals are uniformly applied.



Bi-Directional Presoak Arch

Nozzles angled toward the vehicle's front activate, applying presoak as the car approaches the arch, followed by nozzles angled toward the rear as the car exits, ensuring maximum coverage of all surfaces, including hard-to-clean license plate areas.



Hand Wax Quality Shine in a Fraction of the Time

ShineTecs® and ShineTecs Tri-Foam contain shine polymers that instantly clarify the paint and are buffed in to generate a deep gloss shine and more revenue for the operator.



Flood Rinse Arch

Boosted-pressure Flood Rinse Arch thoroughly rinses vehicles in less time and at higher line speeds than typical low-pressure rain arches. In addition, the pressurized rinse ensures all wash water and foamed chemicals are removed in preparation for final chemical applications and drying.



Finishing

Single and Dual Wax and Rinse Arches make it easy to apply drying agents, total surface protectants, and spot-free rinse in a minimal amount of space.

SoftLine1 Technical Specifications

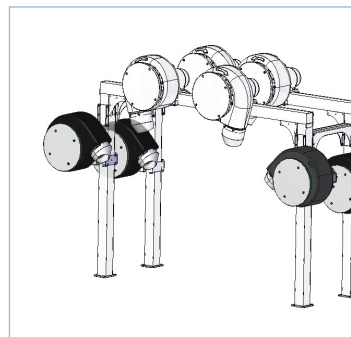
- 15'6" minimum operating width & 11'6" minimum operating clearance
- Electrical service: 208/230V AC 1ph for the brush station and 3ph for the pumps – (3/5 brush) 45 amps ; (7 brush) 65 amps
- Water Pressure: and demand: 50 psi/min at 40 gpm
- Air Pressure and consumption: 80 psi/min ; 145 psi max ; 1 ½" cfm constant
- Weight: 3 brush station: 4,110 lbs / 5 brush station 5,500 lbs / 7 brush station: 6,000 lbs

Everything you need to keep your profits flowing.



Modular Design, Powerful Airflow

SoftLine dryers leverage a modular arch system and a choice of 10 hp or 15 hp producers to match your tunnel's available space and line speeds. In addition, tapered nozzles provide high-velocity airflow to maximize drying results.



Side Blowers

- 10 hp side blowers can now be added for even greater drying performance.
- They can be added without requiring additional bay length and can be configured as a single pair on one arch or two pairs on two consecutive arches.



Downchutes

- Additional arch with two 10 hp side blowers equipped with downchutes to provide an outstanding drying quality on the sides of vehicles.

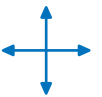
Chemicals



Achieving a Clean, Dry, Shiny car is our promise. At Mark VII Equipment, our continued focus on carwash chemistry provides our customers with the most efficient cleaning and polishing products in the industry. Our trained staff, with knowledge beyond chemistry, has in depth experience with how mechanical and chemistry come together to maximize wash quality.

What to expect from our chemicals

- Chemicals specifically designed to increase speed and throughput in all types of dispensing systems
- Packaging options to maximize backroom space constraints
- Certified Mark VII Green chemistry
- Aggressive on soil and easy on the machine



Marketing

The right merchandising can help drive traffic and profits. Mark VII offers customized site marketing options, video marketing, and digital marketing assistance.



Service

Our factory-trained field service professionals keep your equipment operating at peak performance so you can maximize the return on your business. Our service plan is flexible, so you can choose what equipment is under contract and what you will be charged. Ask a team member for details on how we can customize a plan to fit your needs.

What To Expect From An Advanced Plan

It's easy to budget when you have a fixed monthly flat fee covering everything from preventative maintenance to urgent service. Our technicians are there to support you through all your service and chemical needs.

What To Expect From An On-Demand Plan

This service plan is pay-as-you-go. Chemical and service needs are available upon request, and all charges will be based on time and materials.

Advanced Service Plan

- 3-year contract
- Four preventative maintenance visits/year – full inspection of equipment, wash quality testing to ensure maximum performance (additional visits available upon request)
- Urgent service
- Non-urgent service
- Monthly flat fee

On-demand Service Plan

- No contract
- Maintenance available upon request – full inspection of equipment, wash quality testing to ensure maximum performance
- All service requests are based on technician availability, response time is not guaranteed
- Pay as you go

For complete details, visit www.markvii.net/service.

Car wash means WashTec/Mark VII. Worldwide.



More than **35,000** carwashes worldwide.

WashTec/Mark VII equipment washes **over 2.75 million vehicles a day** around the globe.

Driving carwash growth in over **70** countries.

More than **1,700 employees** help us shape the future of the carwash business, including over **600 service technicians**.

Over **50** years of carwash innovation.

We set the standards in the **carwash business** – and actively push the market forward.

*We are focused on providing clean,
dry, shiny cars.*

www.markvii.net



Mark VII Equipment Inc. | 5981 Tennyson Street | Arvada, Colorado 80003 USA
Phone: 800.525.8248 | Fax: 303.430.0139 | markvii@markvii.net

Mark VII Equipment, Inc. Canada | 623 S Service Rd Unit 1 | Grimsby, ON L3M
4E8 Canada | P: 866.658.9274 | F: 289.235.7950

 **Mark VII**
CLEAN CARS®